



WASEDA University

Let's think about Studying in Japan!

**Sakamoto Shigeki (Waseda University Branch Office Singapore)
E-mail: waseda-Singapore@list.waseda.jp**



WASEDA University

Today

- 1. General Life in Japan (15 min)**
- 2. Education & University in Japan (10 min)**
- 3. About Waseda University (10 min)**
- 4. Q & A Session**



WASEDA University

1. General Life in Japan

春

Spring



夏

Summer



Distinct
Four Seasons

秋

Autumn



冬

Winter





**Blend of
Traditional and
Modern Culture**



Tokyo



WASEDA University

Time Difference **from** SG Time

+1h in JPN

[Ex: at 20:00 in SG, it is 21:00 in JPN]

<Ref> at 20:00 in SG,

- 13:00 in **UK** (-7h)
- 05:00 in **SF/LA** (-15h) & 08:00 in **NY** (-12h)
- 22:00 in **Syd/BNE** (+2h)

Stats & Rankings of Tokyo

**Safest City
In the World**

#1

Safe Cities Index 2019 by EIU

**Best Student City
in The World**

#2

QS Best Student Cities Ranking
2019



Stats & Rankings of Osaka

**Safest City
In the World**

#3

Safe Cities Index 2019 by EIU

**Best Student City
in The World**

#16

Note: Combined (Osaka, Kyoto & Kobe)

QS Best Student Cities Ranking
2019



Tokyo



美珍香

**Bee Cheng Hiang
(Ginza/Shinbashi)**

No image photo

**Ya Kun Kaya Toast
(Shinjuku)**

No image photo

Food Price Comparison (SG & JP)



Case1. Ramen Restaurant @ "I"

- JAPAN Branch: JPY869(**SGD10.50**)
- Singapore Branch: SGD17.55



Case2. Gyudon Restaurant @ "Y"

- JAPAN Branch: JPY387(**SGD4.66**)
- Singapore Branch: SGD7.60

Case3. Kaya Toast with Butter

- JAPAN Branch: JPY430(**SGD5.18**)
- Singapore Branch: SGD2.40

Accommodation (Sample)

Sample Unit:

**-20min by train from Shinjuku
(Simo-Igusa Sta.)**

-20m² (1Room + Kitchen,Bath/Toilet)

**-JPY70,000 (SGD850)/Month
(1 room+ Bath/Toilet/Kitchen/Balcony)**

20m² \approx 215sqf

No image here

Sample of International Community in Tokyo

“**MISHOP** (**M**itaka **I**nternational **S**ociety of **HO**s**P**itality)”

<https://www.mishop.jp/en/index.php>

No image here

What kind of events/opportunities ?

- International Society
- Life support by volunteer staffs
- Japanese Lounge (Language)
- English Lounge (Language)
- Events :International Festival ,etc.
- Provision of supports during Disaster

and more.

Sample of Supports for Foreign Residents in Tokyo

“Tokyo Intercultural Portal Site”

<https://tabunka.tokyo-tsunagari.or.jp/english/index.html#>

No image here

What kind of information for services/opportunities available here?

- International Association
- Life support by volunteer staffs
- Japanese Language class
- Language Volunteer
- Provision of multilingual Information
- Consultation Service
- Useful links for Foreign Residents
- Individual Consultation Service and more.

JUGAS (Japanese University Graduate Association of Singapore)



SSAJ (Singapore Students' Association (Japan))



[Home](#) [About Us](#) [Events & Updates](#) [Living in Japan](#) [Study in Japan](#) [Support Us](#) [Contact Us](#) [Join Us](#)

Singapore Students' Association (Japan)

Being an association for Singaporean students studying in Japan, we are responsible for providing opportunities for Singaporean students in Japan to meet up. Our members are mainly full-time undergraduate and graduate students attending universities in Japan, as well as students who are here on university exchange programmes.

[Read More](#)



Want to Study in Japan?

Check out our sister portal, Study in Japan Singapore, that has information on undergraduate, graduate, and student exchange programmes to Japan. There is also information on cost of living in Japan, scholarships that are available, and a guide to the NEXT Scholarship.

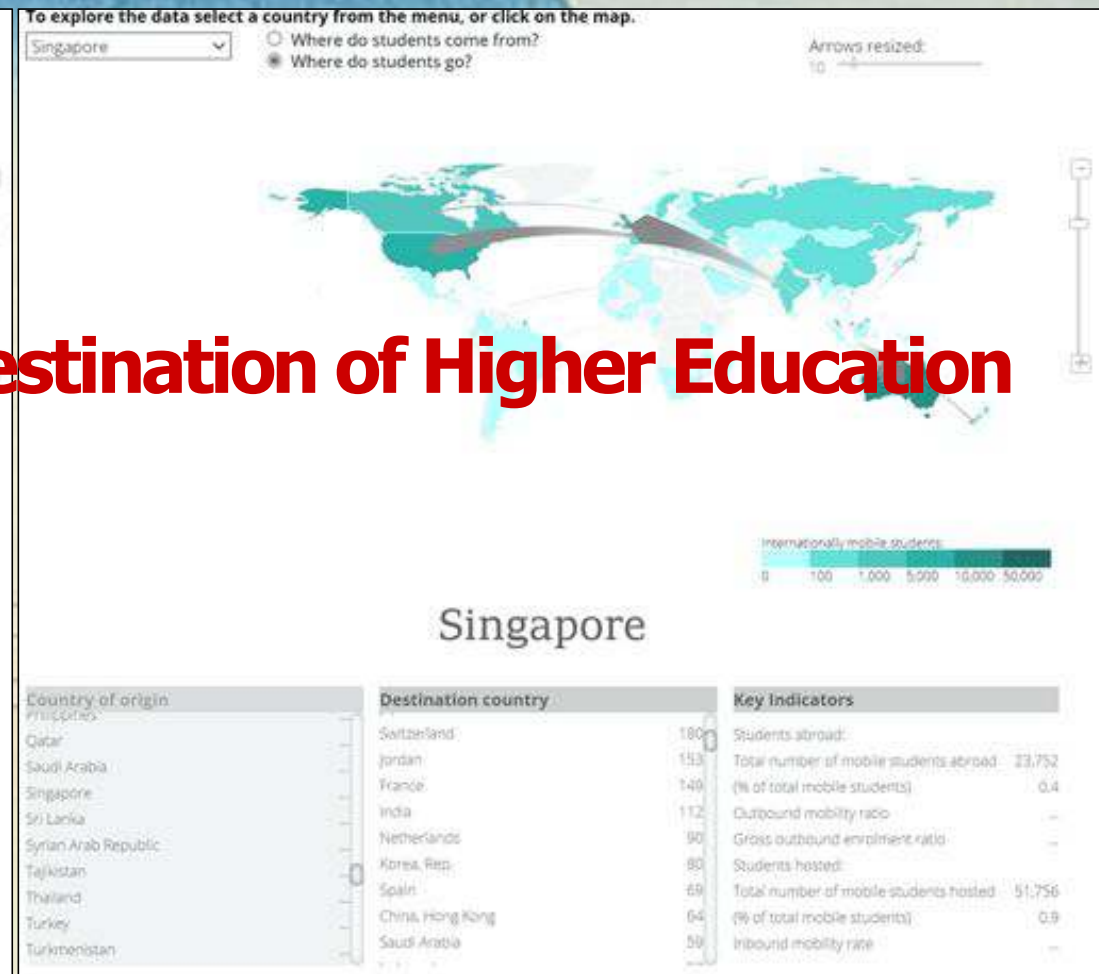
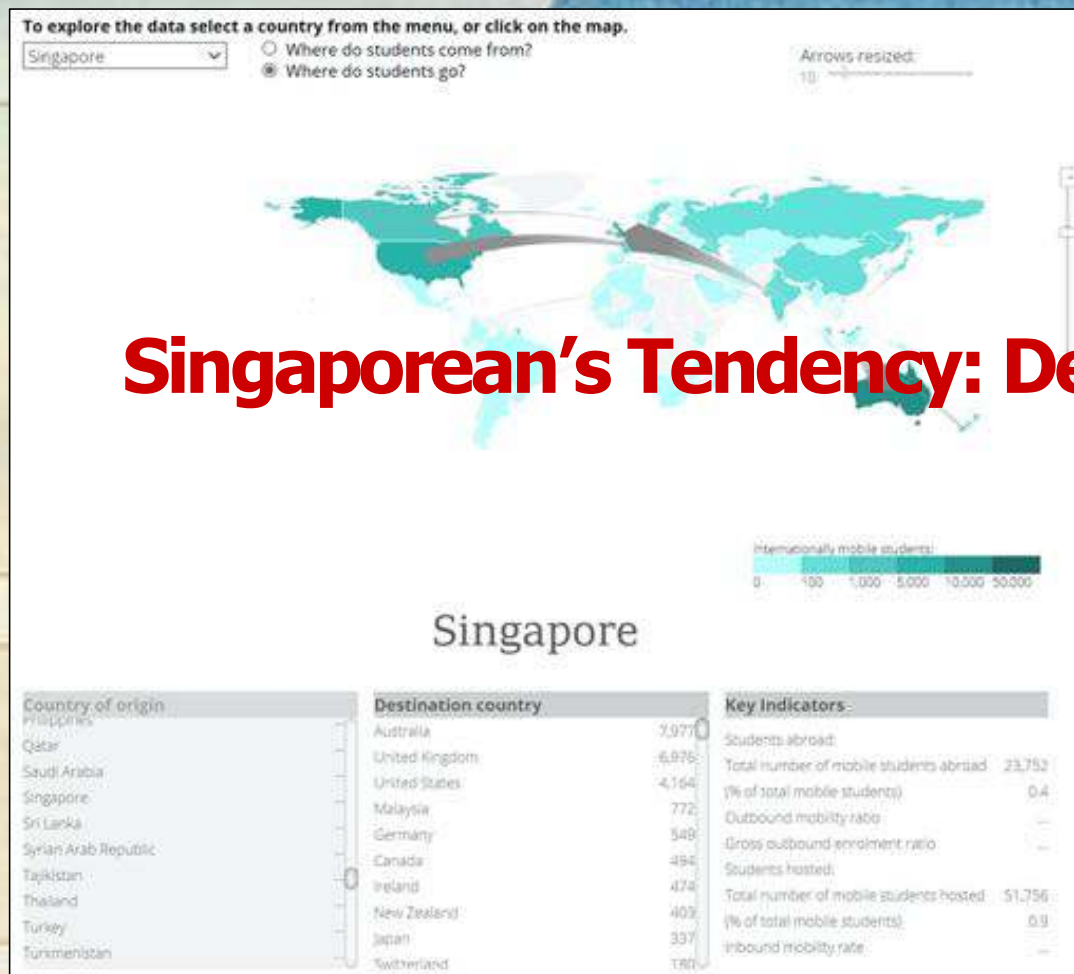
[Take Me There](#)



WASEDA University

2. General Information on Education & University in Japan

Singaporean's Tendency: Destination of Higher Education



#1:AUS(7,977), #2:UK(6,976), #3:US(4,164), #4:Malay(772), #5:DEU(549), #6:CA(494), #7:IE(474), #8:NZ(403), #9:JP(337)

Education Curriculums in Japan

| Category of Education in Japan | Year | <Comparison> Category (SG) | <Comparison> Year (SG) |
|---|-----------|-------------------------------|---------------------------|
| Primary School (<u>Compulsory</u>) | 6y | Primary | 6y |
| Junior High School (<u>Compulsory</u>) | 3y | Secondary | 4y at least |
| Senior High School | 3y | JC/Polytechnic. etc | 2-3y at least |
| University (Bachelor's Degree Program) | 4y | (same as JPN) | 4y |
| University (Master's Degree Program) | 2y | (same as JPN) | 2y |
| University (Doctoral Degree Program) | 3y | (same as JPN) | 3y |

Total 12y of education with (Expected) Graduation status is the requirement for applying to Undergraduate Programs).

FYI:

- In Japan, 85.6% of Junior High School Graduates go to Senior High School.
- Also, 58.6% of Senior High School Graduates to to University in Japan.

As of 2018

Number of Japanese Universities

| Category of University | Number (%) |
|---|----------------------------------|
| National University (Ex: Tokyo Univ./Kyoto Univ. .etc) | 86 (11.0%) |
| Public (State) University (Ex: Tokyo Metropolitan Univ. .etc) | 90 (11.5%) |
| Private University (APU, Keio, Ritsumeikan, Waseda .etc) | 604 (77.4%) |
| Total | 780 universities in Japan |

As of 2018

Average Yearly Tuition Comparison by Category of University

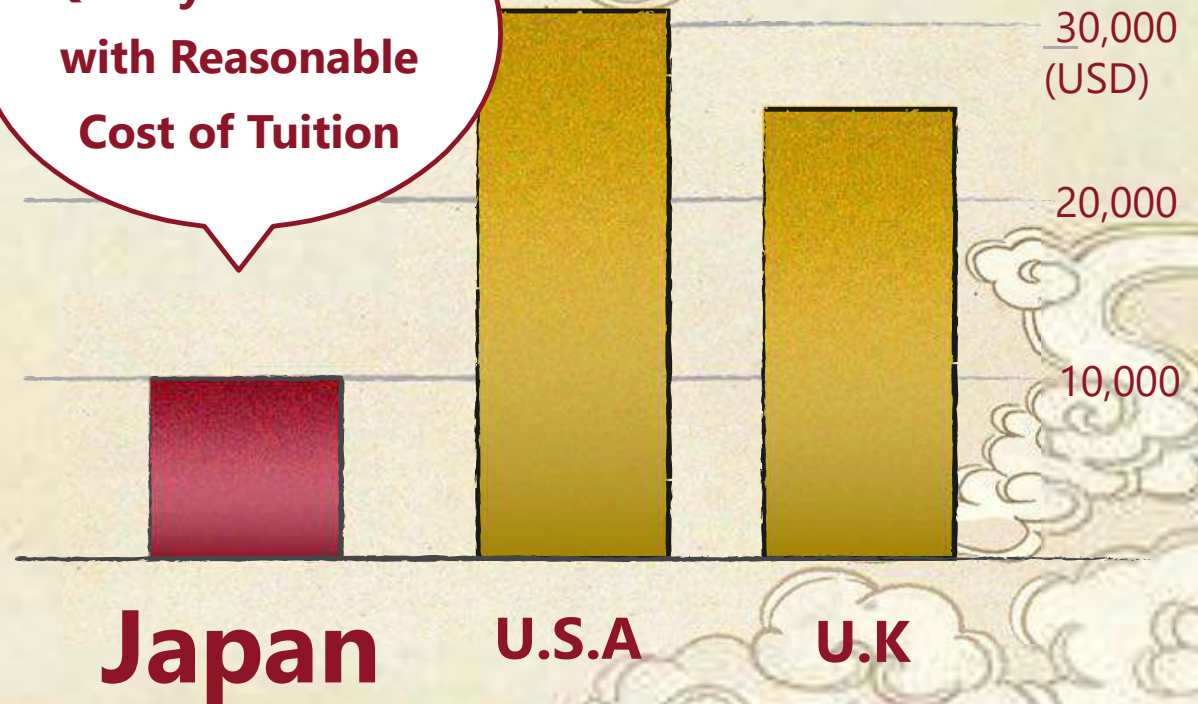
| Category | Yearly Tuition (JPY) | Yearly Tuition (SGD) |
|---|-------------------------|-------------------------|
| National University (Ex: Tokyo Univ./Kyoto Univ. .etc) | JPY817,800 | SGD9,843 |
| Public (State) University (Ex: Tokyo Metropolitan Univ. .etc) | JPY933,251 | SGD11,243 |
| Private University (APU, Keio, Ritsumeikan, Waseda .etc) | JPY1,154,131 | SGD13,905 |

Figures:As of 2018/Currency Conversion rate: SGD1.00= JPY83.00As of 7th June, 2021

Tuition Comparison



Quality Education
with Reasonable
Cost of Tuition





Living Expenses in Tokyo

| Estimated Living Expenses (Month) | |
|---|-------------|
| Housing | SGD850.00 |
| Food and Utilities (Electricity, Internet, Transportation, etc.) | SGD320.00 |
| Other Personal Expenses (Mobile Phones, Books, Clothes, etc.) | SGD330.00 |
| Total | SGD1,500.00 |



WASEDA University

Student Discount for Commuter Pass

-62%

Case between **[Waseda Dorm WISH] ⇔ [Main Campus]** (3 stops)

Tokyo METRO's **[Nakano Sta.] ⇔ [Waseda Sta.]**

Regular fee: $[\text{JPY}170 \times 2 \text{ times/day}] \times [30 \text{ days}] = \text{JPY}10,200/\text{M}$ (\approx **SGD123.00/M**)

Student Pass: $\text{JPY}3,890/\text{M}$ (\approx **SGD47.00/M**)

Part-time Job (under "Student VISA")

28h / week

8h/Day(& Max 40h/week), ← During School Break

Minimum wage in Tokyo: JPY1,013(SGD12)/H

Maximum monthly salary: SGD1,344/Month

Launches of English Education Curriculums (Global 30 Program by MEXT(Ministry of Education))

MEXT's Governmental Policy in 2008

“Accept 300,000 international students in total by 2020”.

Universities adopted as Global 30 Program in 2008

| | |
|---------------------------|--|
| National University | Kyoto, Kyushu, Nagoya, Tokyo, Tohoku, Tsukuba, Osaka (7 universities) |
| Public (State) University | N/A |
| Private University | Doshisha, Keio, Meiji, Ritsumeikan, Sophia, Waseda (6 universities) |
| Total | 13 universities |



WASEDA University

Information on Waseda University

-Most internationalized university in Japan-



WASEDA University

Why WASEDA? Short Movie (3.5 min)



<https://www.youtube.com/watch?v=Nxu4JYEwgzo>

7 English-based Degree Programs

PSE

School of Political Science and Economics

School of Political Science and Economics

SSS

School of Social Sciences

School of Social Sciences

SILS

School of International Liberal Studies

School of International Liberal Studies

CMS

School of Culture, Media and Society

School of Culture, Media and Society

FSE

School of Fundamental Science and Engineering

School of Fundamental Science and Engineering

CSE

School of Creative Science and Engineering

School of Creative Science and Engineering

ASE

School of Advanced Science and Engineering

School of Advanced Science and Engineering





School of Fundamental Science and Engineering

Major in Mathematical Sciences

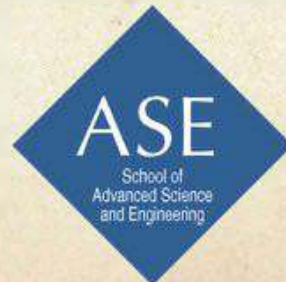
Major in Computer Science and Communications Engineering



School of Creative Science and Engineering

Major in Mechanical Engineering

Major in Civil and Environmental Engineering



School of Advanced Science and Engineering

Major in Physics

Major in Chemistry

Major in Bioscience



Language Support at Waseda

Center for Japanese Language (CJL)



Center for Japanese Language (CJL) supports Japanese education for all students through various programs.

Course Fees are **inclusive of Regular Tuition**.

おはようございます



ありがとう

こんにちは



WASEDA University

How many Singaporean students at WASEDA?

42 / 107

**Degree students / Degree Students
+ Exchange Students**

※As of May 2021

868

Partners among Leading Global Institutions

National University of Singapore

Nanyang Technological University

Stanford University

Yale University

Columbia University

University of Chicago

Cornell University

University of British Columbia

University of Cambridge

University of Oxford

Sciences Po

Australian National University

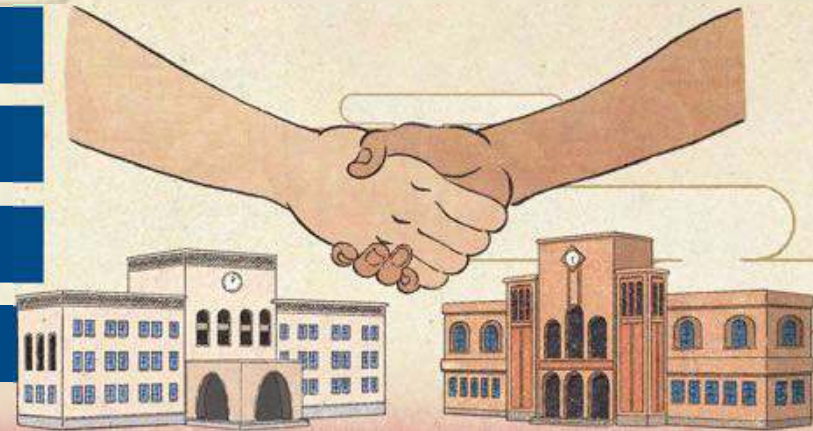
University of Bonn

Peking University

Fudan University

Seoul National University

National Taiwan University





Exchange Programs with Singaporean Universities

NUS (Exchange/*DDP) *Only for SILS

NTU (Exchange/DMBA)

SMU (Exchange)

Waseda's History with Singapore

Mr. Lee Kuan Yew, Waseda University's Honorary Doctor (Conferment Ceremony at Waseda University in 2003)



Waseda Alumni

Yuzuru HANYU

Figure skater, a two-time Olympic champion

Tadashi YANAI

President of UNIQLO

Haruki Murakami

Novelist

The Haruki Murakami Library will open at the main campus, in October 2021!

And more!

The Haruki Murakami Library (Main Campus)



Graduate Employability Rankings

QS Graduate Employability Rankings 2020

#1



among Japanese
Private Universities

#34

in the World





Employment after Graduation

Goldman Sachs

IBM, accenture, HITACHI,
UNIQLO, Deloitte, SHISEIDO,

KONICA MINOLTA, BRIDGESTONE

Google

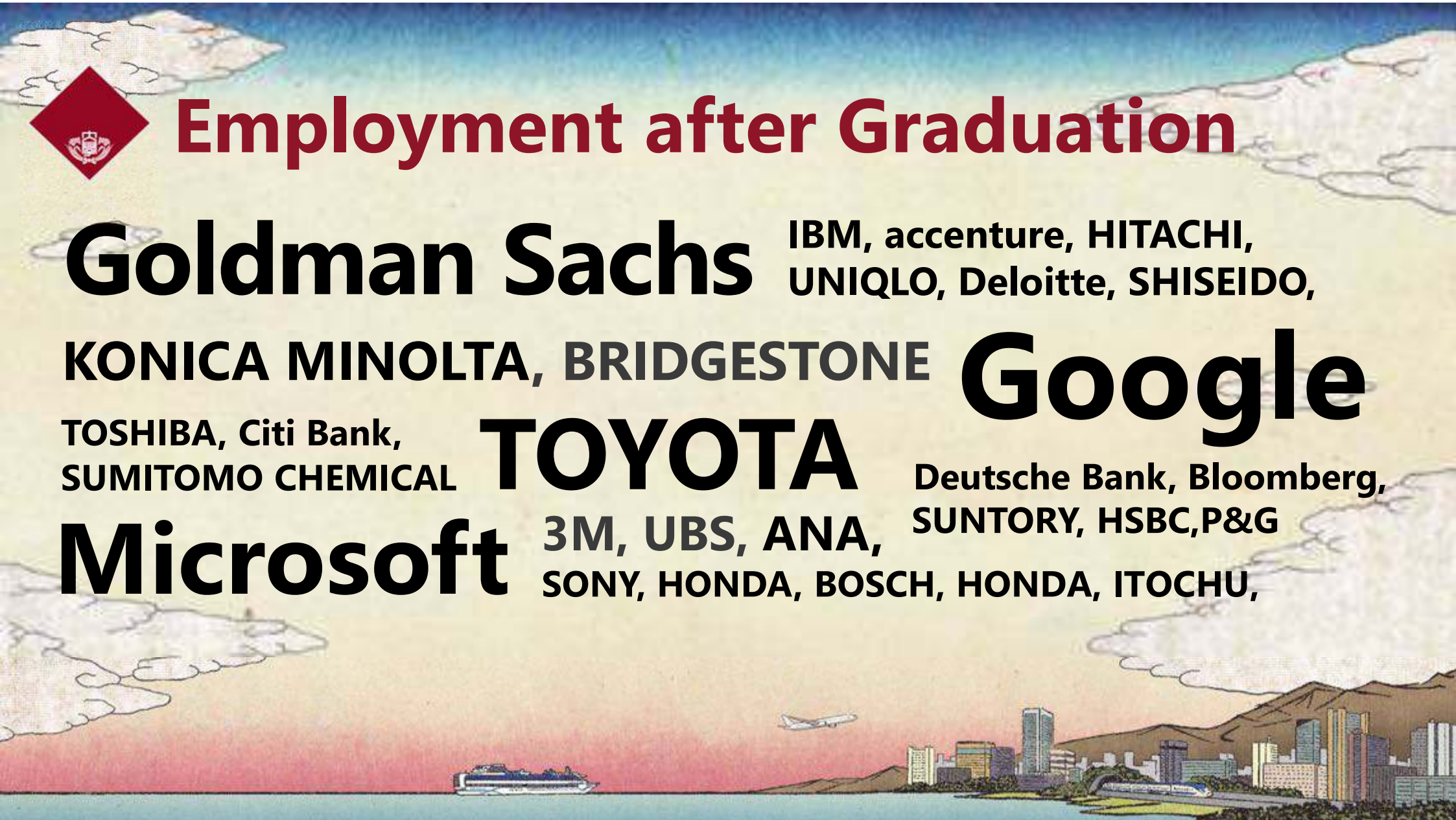
TOSHIBA, Citi Bank,
SUMITOMO CHEMICAL

TOYOTA

Deutsche Bank, Bloomberg,
SUNTORY, HSBC, P&G

Microsoft

3M, UBS, ANA,
SONY, HONDA, BOSCH, HONDA, ITOCHU,





Further Harvard University Studies Columbia University

University of Pennsylvania

Yale University

University of Oxford

University of Cambridge

**The London School of
Economics and Political Science**

University of Oslo

Grenoble Ecole de Management

Universidad Autonoma de Barcelona

Peking University

The Chinese University of Hong Kong

Seoul National University

National University of Singapore

Waseda University etc.





Scholarships at Waseda University

Our Scholarship Policy
NO BOND!

over 100 types available

48%

of International Students receive scholarships



Leave of Absence due to Compulsory Military Service

If you cannot attend classes for a period of 2 month or longer due to the **Compulsory Military Service (NS)**, you may be allowed to take a Leave of Absence.

-Tuition and Fees: Exempted

-Status: Leave of Absence

Example: Application Form for “Leave of Absence”

Submission date: _____ (Year) _____ (Month) _____ (Day)

Application for Leave of Absence

To Dean of School of International Liberal Studies, Waseda University

| | | |
|-----------|---|--------------|
| Applicant | Student ID | |
| | Name (Family / Given) | (“ ”) |
| | Address during Leave of Absence | 〒 (Zip Code) |
| | Phone Number | |
| | Email Address | |
| | Personal Email Address (*Please indicate an e-mail address other than the one written above, such as e-mail address of mobile phone, etc.) | |
| Guarantor | Name (Family / Given) | (“ ”) |
| | Address | 〒 (Zip Code) |
| | Phone Number | |
| | Email Address | |

1. I would like to request permission for taking a leave of absence for the following reason:
Reason: Compulsory military service
2. Semesters you wish to take a leave of absence for
From (Spring / Fall) _____ (year) to (Spring / Fall) _____ (year) for _____ (years long).
3. Semesters when you come back and resume your study at SILS
From (Spring / Fall) _____ (year)
4. Please read the following condition and check the box below.
☐ I hereby promise to come back to SILS as soon as I complete the military service.
☐ **[For Student VISA holders only]** I read and understand the instructions written in “Leave of Absence from the School” regarding my status of residence “Student” during leave of absence.
5. Please check the box below if you agree to update your registered information.
☐ I agree to have my registered profile data updated to the above information.
☐ I agree to have the applicant's registered address changed to blank if it is not a Japanese address, and will register my new address from MyWaseda when my leave of absence is over.

★ Tuition fees payment : _____ (year) _____ (semester) completed the payment
 ★ Are you receiving scholarships (including tuition waiver)? : Yes / No
 ★ Scholarship name : _____
 ★ Receiving period : _____ (year) _____ (month) _____ (day) ~ _____ (year) _____ (month) _____ (day)

◇ Please make sure to inform to the Scholarships and Financial Assistance Section of taking a leave of absence.

Note
 ① Both student and guarantor, please fill out with a pen in your own handwriting.
 ② Both student and guarantor, please use separate seals.

Office use

② 添付書類 (兵役証明書または兵役に行く期間が証明できる書類)

定章 : _____ 年次 _____ 期次納入済

(Office use only)

Forbes "30 Persons under Age 30 in Asia" 2021
(Either Alumni, Student or Ex-students of
Waseda University)

**Mr. Jerome Polin, currently Student
from Indonesia**

Founder of Start-up "Appify"
Mr. Ryosuke Fukuda

Founder of Start-up "Natee"
Mr. Ryouken Kojima

Cofounder of Start-up "Mellow"
Mr. Takuya Moriguchi



WASEDA University

Almost Last Part!

Admissions

Application Documents via Online submission

SILS

School of International
Liberal Studies

CMS

School of Culture,
Media and Society

SSS

School of
Social Sciences

PSE

School of Political Science
and Economics

FSE

School of
Fundamental Science
and Engineering

CSE

School of
Creative Science
and Engineering

ASE

School of
Advanced Science
and Engineering

Application Form

English Essay

Certificate of (Expected) Graduation

Academic Transcript

Standardized Test Score

Recommendation Letter

Singapore GCE A-level

Predicted scores accepted

SILS

School of International
Liberal Studies

CMS

School of Culture,
Media and Society

SSS

School of
Social Sciences

PSE

School of Political Science
and Economics

FSE

School of
Fundamental Science
and Engineering

CSE

School of
Creative Science
and Engineering

ASE

School of
Advanced Science
and Engineering

Two or more

A-level H2 Subjects

Three or more

A-level H2 Subjects

+

**must
include
Math**

+

**must include
Math, Physics
and Chemistry**

Standardized Test Results (IBDP)

SILS

School of International
Liberal Studies

CMS

School of Culture,
Media and Society

SSS

School of
Social Sciences

PSE

School of Political Science
and Economics

FSE

School of
Fundamental Science
and Engineering

CSE

School of
Creative Science
and Engineering

ASE

School of
Advanced Science
and Engineering

IBDP (Predicted Scores accepted)

+

**must
include
Math**

+

**must include
Math, Physics
and Chemistry**



English Proficiency Test Score

SILS

School of International
Liberal Studies

CMS

School of Culture,
Media and Society

SSS

School of
Social Sciences

PSE

School of Political Science
and Economics

FSE

School of
Fundamental Science
and Engineering

CSE

School of
Creative Science
and Engineering

ASE

School of
Advanced Science
and Engineering

TOEFL iBT or IELTS

***FSE, CSE and ASE accept TOEIC**

(NOT required, if you submit the score of SAT, ACT, or IBDP, those taught entirely in English)

+

**TOEFL iBT
95 or over**

**IELTS 7.0 or
over**



Average Scores of Successful Applicants

| School | SAT | ACT | IBDP (out of 42) |
|---|--|------|------------------|
| School of Political Science and Economics | 1424.7 | 31.2 | 37.5 |
| School of Social Science | 1391 | NA | 36.6 |
| School of International Liberal Studies | 1300-1400 | NA | 36-37 |
| School of Fundamental Science and Engineering | 1443.4 Math II: 778.5 Physics: 753.5 Chemistry: 741.3 *The average score of successful applicants of the document screening. | NA | NA |
| School of Creative Science and Engineering | | | |
| School of Advanced Science and Engineering | | | |
| School of Culture, Media and Society | 1396 | NA | 36.3 |

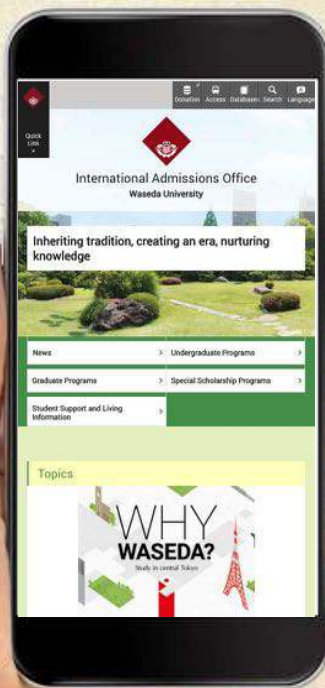
IBDP's average score excludes "Bonus Point (3pt)" from total score, in this data.



Number of Applicants/Successful Applicants

| School | 2018 | | 2019 | | 2020 | |
|---|------------|-----------------------|------------|-----------------------|------------|-----------------------|
| | Applicants | Successful Applicants | Applicants | Successful Applicants | Applicants | Successful Applicants |
| School of Political Science and Economics | 295 | 184 | 394 | 132 | 378 | 202 |
| School of Social Science | 261 | 87 | 273 | 63 | 194 | 76 |
| School of International Liberal Studies | 620 | 144 | 671 | 279 | 602 | 146 |
| School of Fundamental Science and Engineering | 230 | 105 | 267 | 72 | 315 | 130 |
| School of Creative Science and Engineering | | | | | | |
| School of Advanced Science and Engineering | | | | | | |
| School of Culture, Media and Society | 77 | 34 | 88 | 36 | 78 | 34 |

Visit our website for more details!



Search for.....

Waseda IAO



Let's get a
"SHIOK!" Experience
in Japan!





Thank you! ありがとう!



waseda-singapore@list.waseda.jp



Waseda University Singapore Office